

TECHNICAL QUESTIONNAIRE FOR **BOTTELPACK**[®] MACHINES



FILL IN YOUR NEEDS

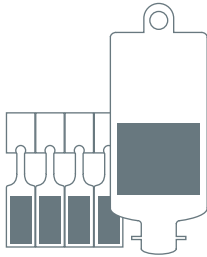
Welcome to the fascinating world of our Blow-Fill-Seal Technology! Whatever your wishes in regard to safe and cost efficient packaging of your products are – we are confident of having the right answer. Your valuable information will enable us to offer you a customized proposal and we are looking forward to receive your details for FILLING YOUR NEEDS.

COMPANY PROFILE AND PROJECT MANAGEMENT

Name of the Company	<input type="text"/>
Site of the Company	<input type="text"/>
Contact Person	<input type="text"/>
Title	<input type="text"/>
First Name	<input type="text"/>
Last Name	<input type="text"/>
Position	<input type="text"/>
Street/P.O. Box	<input type="text"/>
Zip Code	<input type="text"/>
City	<input type="text"/>
Country	<input type="text"/>
Telephone number	<input type="text"/>
Mobile number	<input type="text"/>
Email address	<input type="text"/>

1. PRODUCT

1.1 WHAT PRODUCT DO YOU INTEND TO FILL?



- IV - Solutions
- Irrigation
- Contact Lense Solution
- Other
- Injectables
- Ophthalmics
- Inhalation

2. CAPACITY AND PRODUCT REQUIREMENTS

2.1 TOTAL ANNUAL PRODUCTION QUANTITY REQUIRED

If multiple container sizes please indicate annual quantity for each individual size:

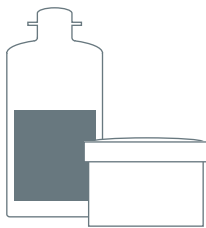


SIZE 1	<input style="width: 100px; height: 25px;" type="text"/>	units/year	<input style="width: 100px; height: 25px;" type="text"/>	ml
SIZE 2	<input style="width: 100px; height: 25px;" type="text"/>	units/year	<input style="width: 100px; height: 25px;" type="text"/>	ml
SIZE 3	<input style="width: 100px; height: 25px;" type="text"/>	units/year	<input style="width: 100px; height: 25px;" type="text"/>	ml

2.2 HOW DO YOU PLAN TO OPERATE YOUR PRODUCTION LINE?

Shifts
 hours/day
 days/year

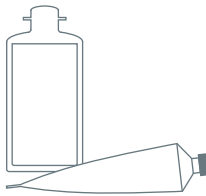
2.3 HOW IS YOUR PRODUCT FILLED TODAY?



- Glass
- PE
- PP
- PET
- Other
- Currently no production

2.4 FILL PRODUCT CHARACTERISTICS

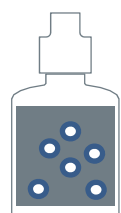
Please mark the product types you intend to fill:



- Aqueous Solutions
- Suspension
- Emulsion
- Crème
- Other
- Max. Viscosity mPas

2.5 OTHER PROPERTIES OF YOUR FILL PRODUCT

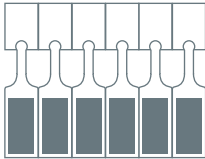
If applicable, please mark any other properties of your fill product(s):



- Foaming
- Corrosive
- Abrasive
- Toxic
- Flammable/explosive
- Temperature sensitive
- Oxygen sensitive
- Other

3. REQUIREMENTS FOR CONTAINER DESIGN

3.1 SMALL VOLUME (UP TO 50 ML)



CONTAINER
TYPE

- Multiblock
- Single
- Recap/ dust cover

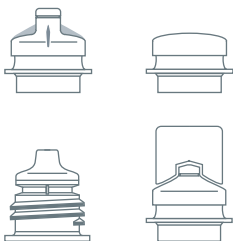


CLOSURE
TYPE

- Twist-off
- Luer
- Thread
- Other

Additional design requirements:

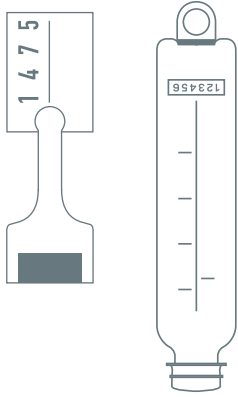
3.2 LARGE VOLUME (MORE THAN 50 ML)



CONTAINER
CLOSURE

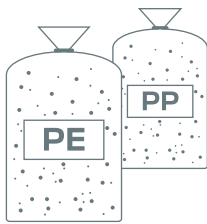
- Nippelhead
- Eurohead
- Screw cap/Thread
- Twist-off
- Other
- Small opening
- Large opening

3.3 CONTAINER ENGRAVING REQUIREMENTS



- Company Logo
- EXP coding
- Other
- LOT coding
- Fill level indication

3.4 PLASTIC MATERIAL TO BE USED



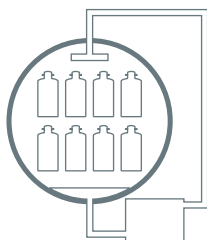
SMALL VOLUME
(< 50ML)

- PE type
- PP type
- Multilayer CoExtrusion
- Other

LARGE VOLUME
(≥ 50ML)

- PE type
- PP type
- Multilayer CoExtrusion
- Other

3.5 TERMINAL STERILIZATION REQUIRED?



- Yes °C
- No

4. ADDITIONAL INFORMATION

4.1 INFORMATION ON ADDITIONAL SERVICES REQUESTED

- Qualification/validation support
- Extended Service Package for machine maintenance (ESP)
- Test kit for compatibility studies on various plastic types
- Container development support (test moulds, 3D printing)
- Test fillings, stability fills under GMP conditions

4.2 INFORMATION ON OTHER EQUIPMENTS REQUESTED

- HVLD high voltage leak detector
- Inspection machine for particles and/or cosmetic
- Automatic IPC in-process control machine
- Cap welding machine

4.3 ADDITIONAL REMARKS

In order to even better understand your requirements kindly provide us with additional information regarding your inquiry you feel to be important